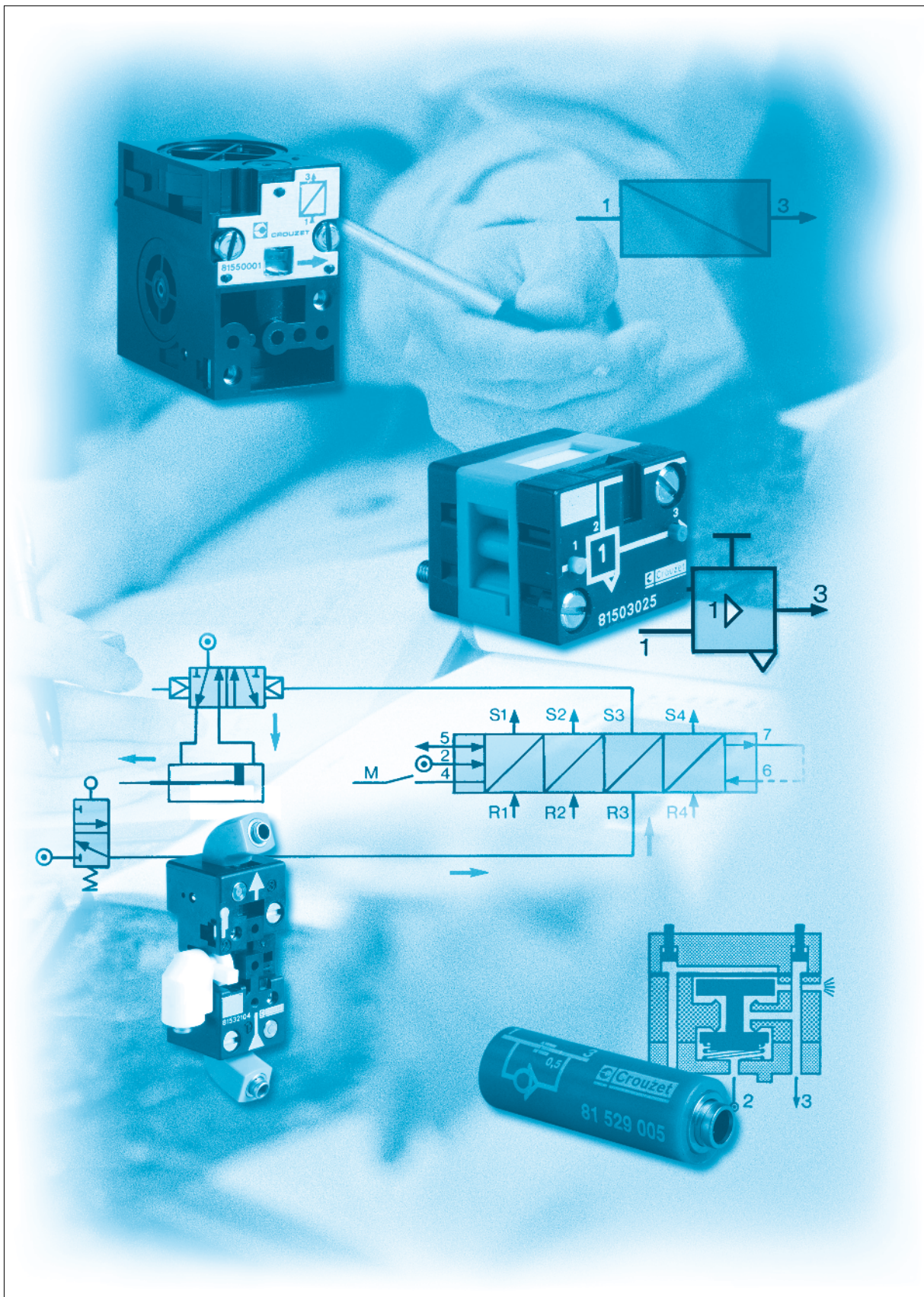


Pneumatic logic components



General characteristics

Operating fluid

- Compressed air or inert gas.

Conditions of use

- Operating pressure 2 at 8 bars (except for special conditions).
- Fluid: Filtered air to 50 microns - non lubricated.
- Operating temperature from - 5° C to + 50° C (under + 5° C the dew point must be below 10° C for the application).
- For optimum performance, the elements should be inter-connected by air supply tubing with an internal diameter \geq at 2.5 mm.

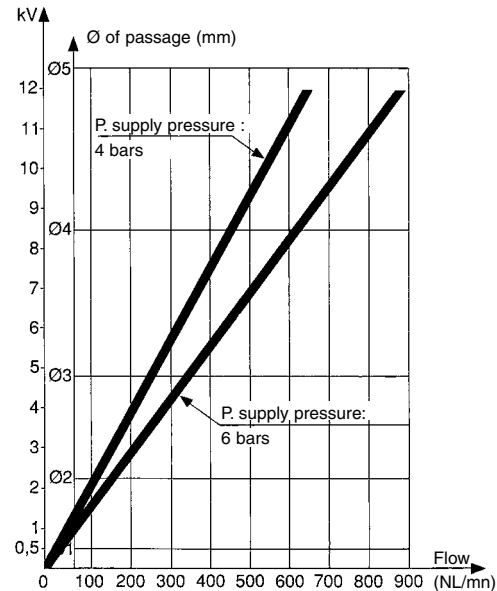
Mounting recommendations

- The elements should be mounted and piped in a clean atmosphere in order to prevent any form of pollution entering the system.
- Minimum torque for element fixing screws: 5 cm/kg.
- maximum torque for element fixing screws: 10 cm/kg.

Characteristics common to all elements in the modular system

- The characteristics have been obtained with a supply pressure at 6 bars.
- The flow in NI/min is the number of litres of air at normal atmospheric pressure obtained with the output open to atmosphere and the supply pressure at 4 bars
- The consumption in NI/min is the number of litres of free air necessary for the unit to function.
- kV = the flow coefficient of the equipment.
- Mechanical life > 10⁷ operations.

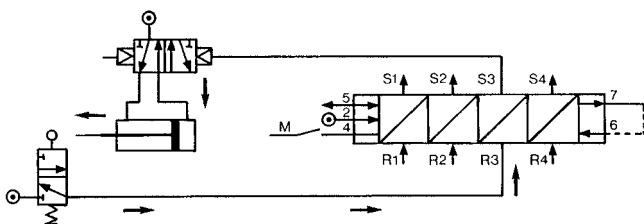
flow graphs



Sequencer modules

Operation results from the combination of a sequential cycle. A system comprises individual modules which are joined together by means of a sub-base. Each module has a memory which delivers an output signal and receives an input signal.

An indicator on each module allows the operator to monitor the progress of the cycle and identify quickly and easily any fault which may occur.

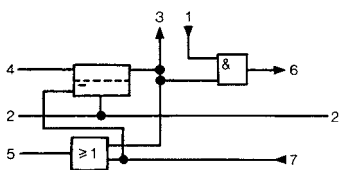


Operation results from the combination of three functions (memory, AND and OR) which constitute each module.

The memory activates the output and gives priority to the reset signal. The AND element ensures the transition to the next module but only if an input signal is present.

The OR element ensures the resetting of all previously operated modules

Function diagram

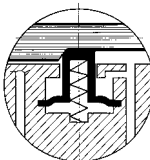


sequencer module with maintained reset

Brake

This maintains the memory spool in position only when the supply is lost.

Module with auto reset



Brake

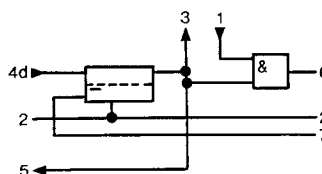
This returns the memory spool to the reset condition only when the supply is lost

Shift register

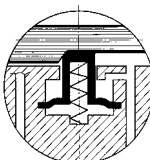
The general principle is to advance the sequencer step by command impulses to the inputs of the even steps, alternating with the command impulses to the inputs of the odd steps.

Used for example on a transfer machine to shift the information "bad component" collected at a test-test "n" steps further along the machine to a reject station.

Function diagram



Auto reset sequencer module

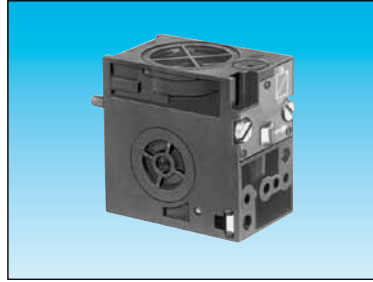


Sequencer modules

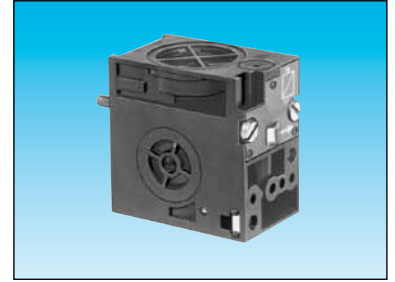
- 100 % pneumatic
- Ideal for a simple pneumatic sequence



Also available in **ATEX** version for use in potentially explosive atmospheres in accordance with 94/9/EC Directive



81 550 001
with 'maintain'



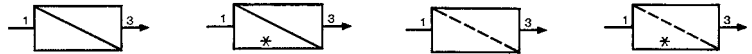
81 550 201
Reset to zero

81 550 401
with 'maintain'

81 550 601
Reset to zero

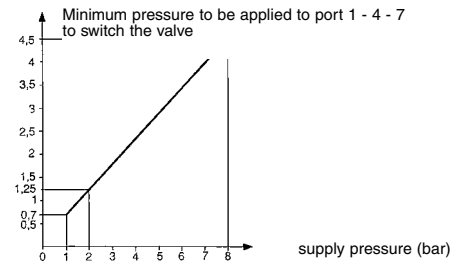
Versions sequencer
shift register

Symbol



Characteristics

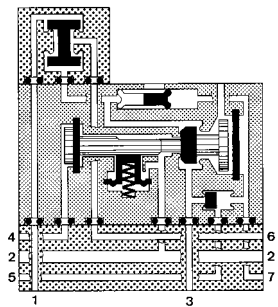
| | | | | | |
|---|--------|----------|----------|----------|----------|
| Operating pressure | bar | 2 → 8 | 2 → 8 | 2 → 8 | 2 → 8 |
| Orifice diameter | mm | 2.7 | 2.7 | 2.7 | 2.7 |
| Flow at 6 bars | NI/min | 150 | 150 | 150 | 150 |
| Operating temperature | °C | -5 → +50 | -5 → +50 | -5 → +50 | -5 → +50 |
| Mechanical life 5 x 10 ⁶ at 6 bars | | ● | ● | ● | ● |
| Connection - Sub-base page 26 | | ● | ● | ● | ● |
| Weight | g | 70 | 70 | 70 | 70 |



Principle of operation

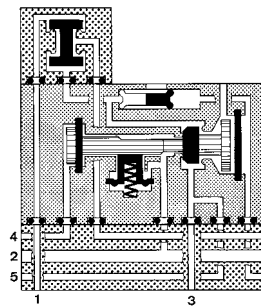
(supplied without logic element. For choice of units see pages 46/47)

Sequencer module with maintained reset



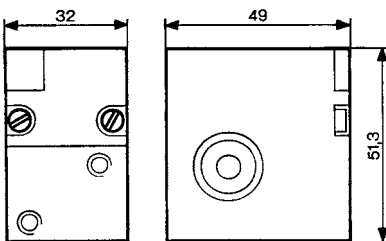
- 1 - Input signal
- 2 - Supply
- 3 - Output signal
- 4 - Start signal
- 5 - In cycle signal
- 6 - End of cycle signal
- 7 - Reset to zero signal

Shif register with maintained reset

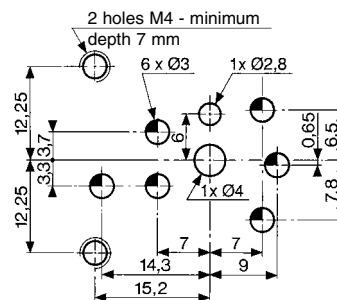


- 1 - Input signal
- 2 - Supply
- 3 - Output signal
- 4 - Start signal
- 5 - In cycle signal
- 6 - End of cycle signal
- 7 - Reset to zero signal

Dimensions



Mounting plan for sequencer

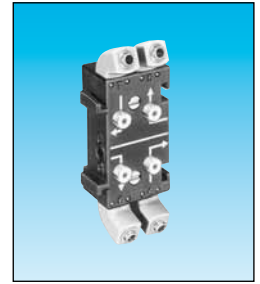
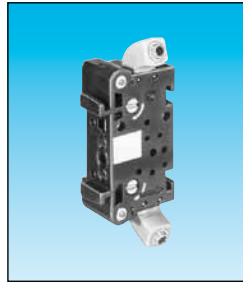


ATEX version products are available in the following catalogues: **Pneumatic products for explosive atmospheres** or on our website www.crouzet.com

Sequencer sub-bases



Also available in **ATEX** version for use in potentially explosive atmospheres in accordance with 94/9/EC Directive



81 551 101
Sub-base (DIN oméga)

81 552 101
End bases - one pair

81 552 601
Diversion base

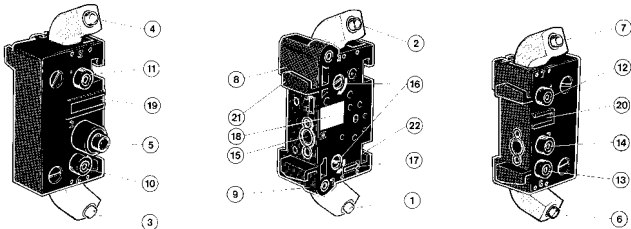
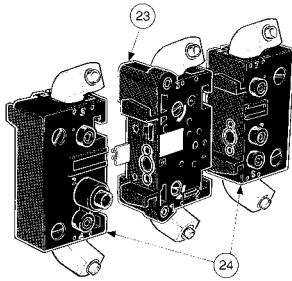
Versions Front connecting (DIN-omega)
Rear connecting (with clips)

Characteristics

| | | | | |
|-----------------------|----------------------|----------|----------|----------|
| Sub-bases (fitted) | Rotatable connectors | | | |
| | Pressure indicators | | | |
| Operating temperature | °C | -5 → +50 | -5 → +50 | -5 → +50 |
| Weight | g | 55 | 135 | 60 |

Sequencer connections

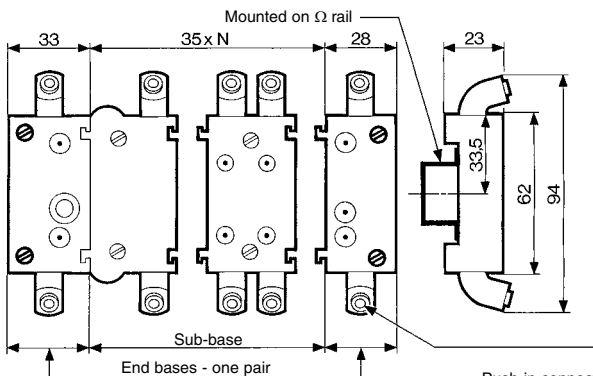
Front connecting



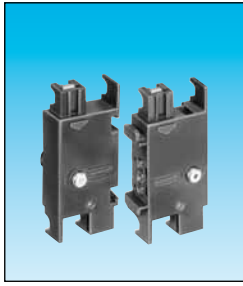
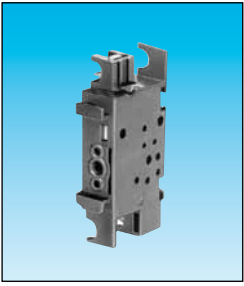
- 1 - Input port (green port 1) Ø 4
- 2 - Output port (red port 1) Ø 4
- 3 - Input port, cycle start (green port 1) Ø 4
- 4 - Output port, in-cycle signal (red port 1) Ø 4
- 5 - Output port, cycle end (red port 6) Ø 4
- 6 - Output port, cycle end (red port 6) Ø 4
- 7 - Input port, reset to zero (green port 7) Ø 4
- 8 - Output indicator (red)
- 9 - Input indicator (green)
- 10 - Cycle start indicator at port 4 (green)
- 11 - In-cycle indicator at port 5 (red)
- 12 - Input indicator at port 7 (green)
- 13 - End of cycle indicator at port 6 (red)
- 14 - Supply indicator at port 2 (yellow)
- 15 - Interconnecting ports
- 16 - Fixing screws
- 17 - Engraved arrow to indicate direction of sequence
- 18 - Marking tag
- 19 - Marking tag position
- 20 - Marking tag position
- 21 - Mounting tongue
- 22 - Mounting groove
- 23 - Sub-base
- 24 - End bases

Dimensions

Front connecting



Push-in connection for semi-rigid tube Ø 4 mm (NFE 49100)



81 551 001

Sub-base (with clips)

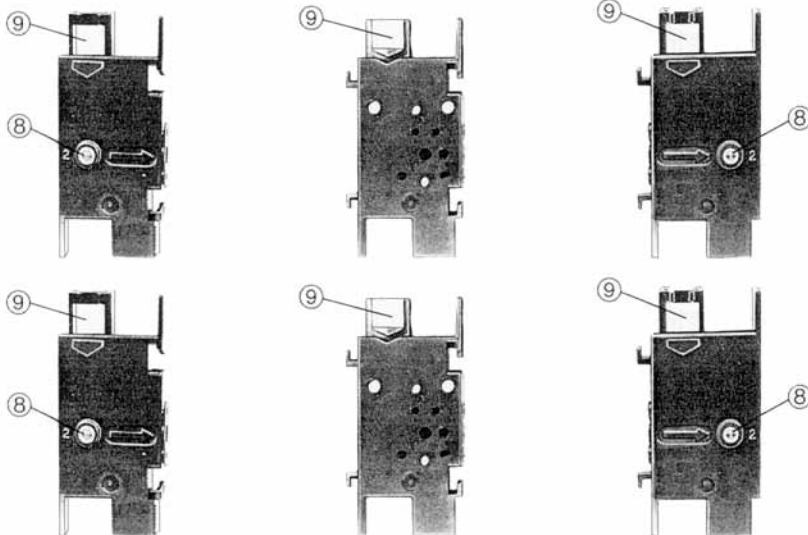
81 552 001

End bases - one pair

-5 → +50
40

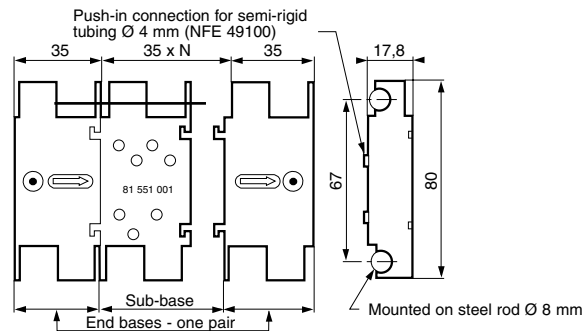
-5 → +50
120

Rear connecting



- 1 - Input port (marked port 1)
- 2 - Supply port (Port 2)
- 3 - Output port (Port 3)
- 4 - Cycle start signal port (Port 4)
- 5 - In-cycle signal port (Port 5)
- 6 - End of cycle signal port (Port 6)
- 7 - Reset to zero signal port (Port 7)
- 8 - Indicator at supply port
- 9 - Marking area

Rear connecting



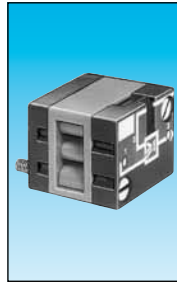
ATEX version products are available in the following catalogues: **Pneumatic products for explosive atmospheres** or on our website www.crouzet.com

Logic elements

- Performs "combined" Pneumatic
- Easy to use



Also available in **ATEX** version for use in potentially explosive atmospheres in accordance with 94/9/EC Directive



81 521 501



81 540 001



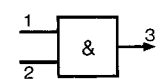
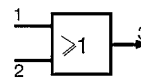
81 540 005



81 522 501

| | | | | | |
|-----------|-----|-------------------------------|----------------|----------------|-------------------------------|
| Functions | OR | — | — | — | — |
| | AND | — | — | — | — |
| | YES | — | — | — | — |
| | NO | — | — | — | — |
| Version | | On Sub-base page 4/14-4/15 | Plug-in Ø 4 | Plug-in Ø 6 | On Sub-base page 4/14-4/15 |

Symbol



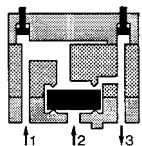
Characteristics

| | | | | | |
|--|----------------------|------------------|------------------|------------------|------------------|
| Push-in connection for semi-rigid tubing (NFE 49100) | Male/Female/Female | — | — | — | — |
| | Female/Female/Female | — | — | — | — |
| Colour | | Blue | Blue | Blue | Green |
| Operating pressure | bar | 2 → 8 | 2 → 8 | 2 → 8 | 2 → 8 |
| Orifice diameter | mm | 2.7 | 2.7 | 4 | 2.7 |
| Flow at 6 bars | NI/min | 170 | 170 | 200 | 170 |
| Pressure indicator | | ● | — | — | ● |
| Switching time | ms | — | — | — | — |
| Operating temperature | °C | -5 → +50 | -5 → +50 | -5 → +50 | -5 → +50 |
| Mechanical life | operations | >10 ⁷ | >10 ⁷ | >10 ⁷ | >10 ⁷ |
| Weight | g | 25 | 12 | 25 | 25 |

Pilot/pressure curves

P_p : Pilot pressure
P_a : Supply pressure

Principle of operation

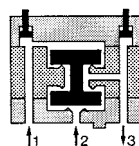


Cellule OR

The output signal "S" is present when a signal at "a" OR "b" is present:

$$S = a \text{ OR } b$$

$$S = a + b$$



Cellule AND

The output signal "S" is present only when signals "a" AND "b" are present simultaneously:

$$S = a \text{ AND } b$$

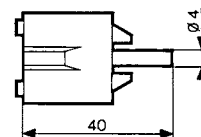
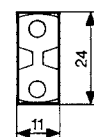
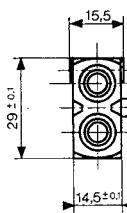
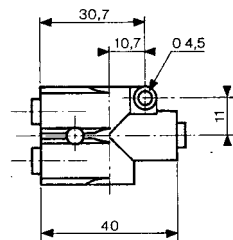
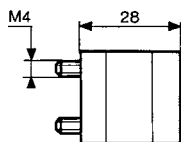
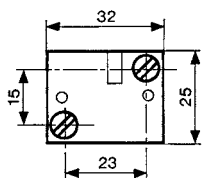
$$S = a \cdot b$$

Dimensions

81 521 501 - 81 522 501

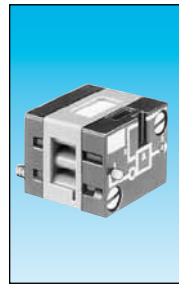
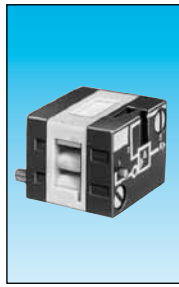
81 540 005 - 81 541 005

81 540 001 - 81 541 001



Other information

See pages 54/55 for mounting plan for logic elements.



81 541 001

81 541 005

81 501 025

81 503 025

81 504 025

81 506 025

Plug-in
Ø 4

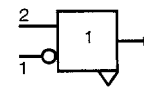
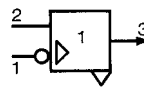
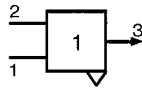
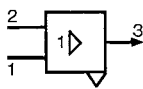
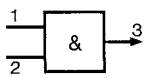
Plug-in
Ø 6

On sub-base
page 36-37

Threshold
On sub-base page
4/14-4/15

Threshold
On sub-base page
4/14-4/15

Threshold
On sub-base page
4/14-4/15



Ø 4 mm

Ø 6 mm

Green

Green

Yellow

Orange

Light grey

Dark grey

2 → 8

2 → 8

2 → 8

2 → 8

2 → 8

2 → 8

2.7

4

2.7

2.7

2.7

2.7

150

200

170

170

170

170

< 4

< 4

< 4

< 4

< 4

< 4

-5 → +50

-5 → +50

-5 → +50

-5 → +50

-5 → +50

-5 → +50

>10⁷

>10⁷

>10⁷

>10⁷

>10⁷

>10⁷

13

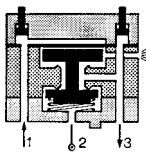
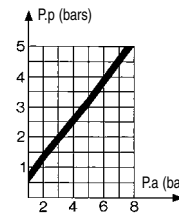
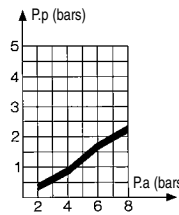
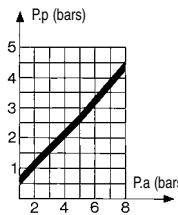
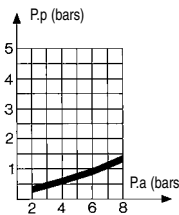
25

30

30

30

30

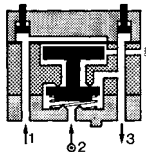


YES element

The output signal "S" is only present when the pilot is present "a" is present:

$S = a \text{ YES } b$

$S = a$



NOT element

The output signal "s" is present only if the input signal "a" is NOT present. The output signal is therefore the inverse of the pilot signal:

$S = \text{NOT } a$

$S = \bar{a}$

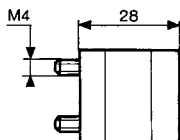
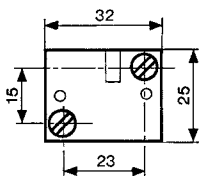
If the supply port is connected to a 2nd input "b", the function obtained is called inhibition:

$S = \text{NOT } a \text{ AND } b$

$S = \bar{a} \cdot b$

81 501 025 - 81 503 025

81 504 025 - 81 506 025



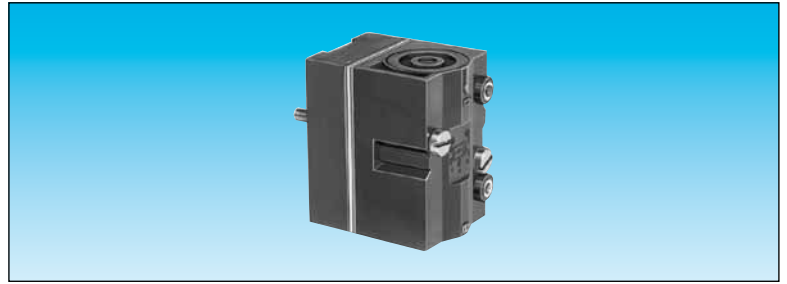
ATEX version products are available in the following catalogues: **Pneumatic products for explosive atmospheres** or on our website www.crouzet.com

Memory element

- 100 % pneumatic
- Bistable pneumatic



Also available in **ATEX** version for use in potentially explosive atmospheres in accordance with 94/9/EC Directive

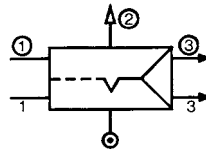


Version

81 523 201
With pressure indicator

81 523 601
With pressure indicator and manual override

Symbol



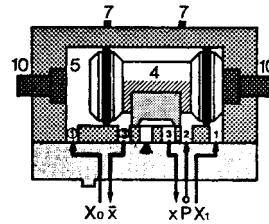
Characteristics

| | | | |
|-------------------------------|--------|-----------|----------|
| Colour | | Black | Black |
| Operating pressure | bar | 2 → 8 | 2 → 8 |
| Orifice diameter | mm | 2.7 | 2.7 |
| Minimum memory pilot pressure | bar | 2.5 | 2.5 |
| Operating temperature | °C | -5 → +50 | -5 → +50 |
| Flow at 6 bars | NI/min | 200 | 200 |
| Connection - On sub-base page | | 4/14-4/15 | |
| Weight | g | 90 | 90 |

Principle of operation

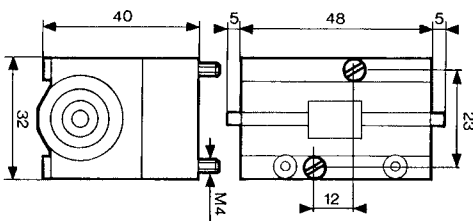
The function is that of a 4/2 valves. The appearance of signal "X1" causes the displacement of the slide valve. The output port "x" is then put under pressure. This state is remembered until the arrival of signal "X0". This signal reverses the slide valve, the output "x" is put under pressure. This state is likewise remembered. The output:

- "x" under pressure indicates that the information in the MEMORY is "X1",
- "x" under pressure indicates that the information in the MEMORY is "X0".

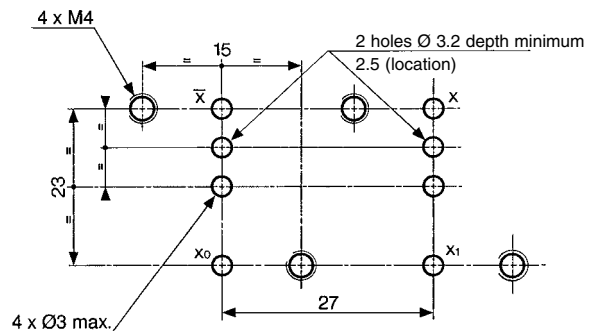


Dimensions

81 523 201 - 81 523 601



Dimensions of logic and memory elements



Viewed from above

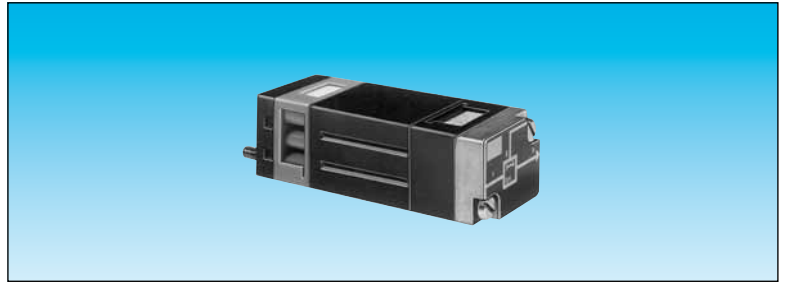
ATEX version products are available in the following catalogues: **Pneumatic products for explosive atmospheres** or on our website www.crouzet.com

Timers fixed timing

■ Fixed 0.4 s



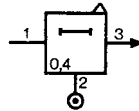
Also available in **ATEX** version for use in potentially explosive atmospheres in accordance with 94/9/EC Directive



81 503 540
Positive output

Version

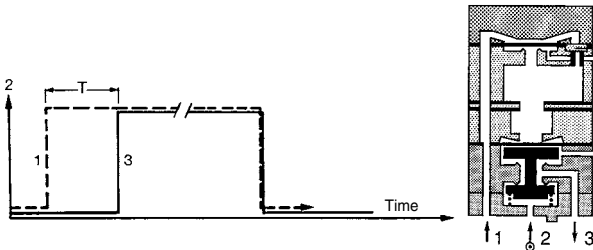
Symbol



Characteristics

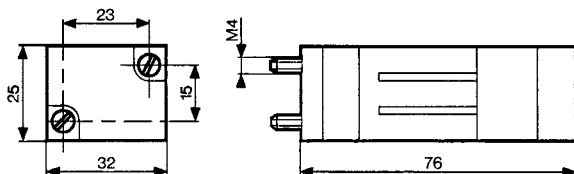
| | | |
|-------------------------------------|------------|------------------|
| Timing | s | 0.4 |
| Operating pressure | bar | 2 → 8 |
| Flow at 6 bars | NI/min | 170 |
| Orifice diameter | mm | 2.7 |
| Accuracy | % | ± 5 |
| Min. reset time | s | <0.1 |
| Connection - On sub-base page 36-37 | | ● |
| Operating temperature | °C | -5 → +50 |
| Mechanical life | operations | >10 ⁷ |
| Weight | g | 106 |

Principle of operation with positive output



Dimensions

81 503 540



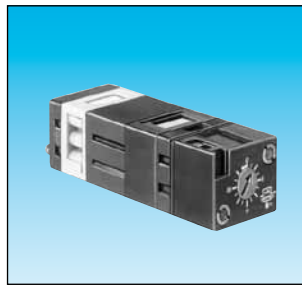
ATEX version products are available in the following catalogues: **Pneumatic products for explosive atmospheres** or on our website www.crouzet.com

Timers (with adjustable timing)

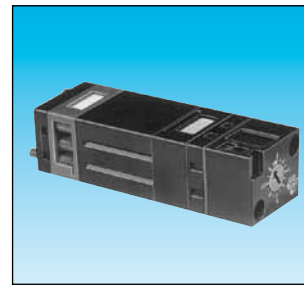
■ 60 s adjustable (60 s max.)



Also available in **ATEX** version for use in potentially explosive atmospheres in accordance with 94/9/EC Directive



81 503 710



81 506 710



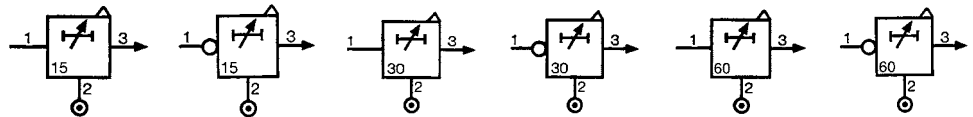
81 503 720

81 506 720

81 503 725

81 506 725

| | | |
|----------|----------|---|
| Function | positive | ● |
| | negative | — |



Characteristics

| | | | | | | | |
|---|------------|------------------|------------------|------------------|------------------|------------------|------------------|
| Timing | s | 0.1 → 15 | 0.1 → 15 | 0.1 → 30 | 0.1 → 30 | 0.1 → 60 | 0.1 → 60 |
| Operating pressure | bar | 2 → 8 | 2 → 8 | 2 → 8 | 2 → 8 | 2 → 8 | 2 → 8 |
| Flow at 6 bars | NI/min | 170 | 170 | 170 | 170 | 170 | 170 |
| Orifice diameter | mm | 2.7 | 2.7 | 2.7 | 2.7 | 2.7 | 2.7 |
| Accuracy | % | ± 5 | ± 5 | ± 5 | ± 5 | ± 5 | ± 5 |
| Min. reset time | s | <0.1 | <0.1 | <0.1 | <0.1 | <0.1 | <0.1 |
| Connection - On sub-base page 4/14-4/15 | | ● | ● | ● | ● | ● | ● |
| Operating temperature | °C | -5 → +50 | -5 → +50 | -5 → +50 | -5 → +50 | -5 → +50 | -5 → +50 |
| Mechanical life | operations | >10 ⁷ | >10 ⁷ | >10 ⁷ | >10 ⁷ | >10 ⁷ | >10 ⁷ |
| Weight | g | 90 | 90 | 100 | 100 | 120 | 120 |

Accessories

| | | | | | | | |
|------------------------|---|------------|------------|------------|------------|---|---|
| Panel mounting adaptor | | 79 451 698 | 79 451 698 | 79 451 903 | 79 451 903 | — | — |
| Weight | g | 53 | 53 | 53 | 53 | — | — |

Principle

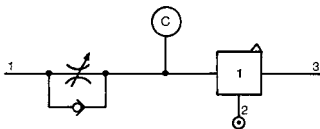
The operation of these pneumatic timers is similar to that of electronic timers (circuit with capacitor/resistor)

Principle of operation

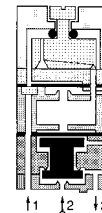
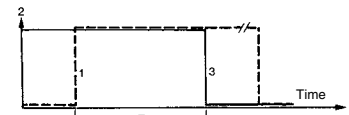
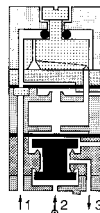
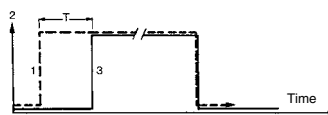
with positive output

with negative output

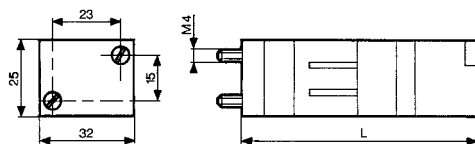
Timing by charging of reservoir



The reservoir fills via the flow restrictor until the switching point of the timer output is reached (positive or negative). The non-return valve allows the reservoir to be emptied rapidly for the next timing.

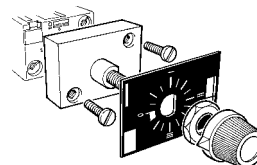
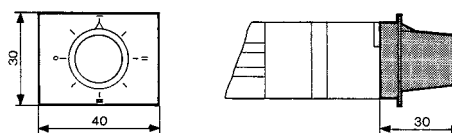


Dimensions



| | L (mm) |
|-------------------------|--------|
| 81 503 710 - 81 506 710 | 78 |
| 81 503 720 - 81 506 720 | 92 |
| 81 503 725 - 81 506 725 | 125 |

Adaptor 79 451 ...



For panel mounting, a pre-drilled hole Ø 10.5 mm is required

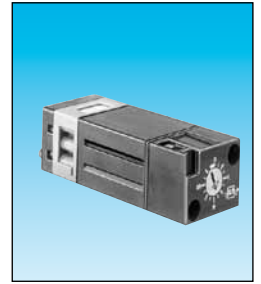
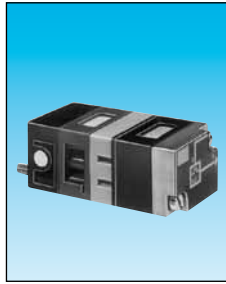
ATEX version products are available in the following catalogues: **Pneumatic products for explosive atmospheres** or on our website www.crouzet.com

Timers

■ Fixed and adjustable

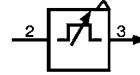
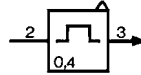


Also available in **ATEX** version for use in potentially explosive atmospheres in accordance with 94/9/EC Directive



| | | | | |
|--------------------------------|------------|------------|------------|------------|
| Single impulse generator | Fixed | 81 507 540 | — | — |
| | Adjustable | — | 81 507 720 | — |
| Adjustable frequency generator | — | — | — | 81 506 940 |

Symbol



Characteristics

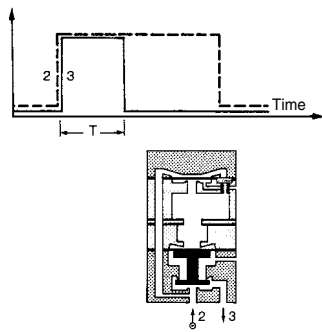
| | | | | |
|---|------------|------------------|------------------|------------------|
| Timing | s | 0.4 | 0.1 → 30 | — |
| Frequency | Hz | — | — | 0.02 → 8 |
| Operating pressure | bar | 2 → 8 | 2 → 8 | 2 → 8 |
| Flow at 6 bars | Nl/min | 170 | 170 | 170 |
| Orifice diameter | mm | 2.7 | 2.7 | 2.7 |
| Accuracy | % | ± 5 | ± 5 | ± 5 |
| Min. reset time | s | <0.1 | <0.1 | <0.1 |
| Connection - On sub-base page 4/14-4/15 | | ● | ● | ● |
| Operating temperature | °C | -5 → +50 | -5 → +50 | -5 → +50 |
| Mechanical life | operations | >10 ⁷ | >10 ⁷ | >10 ⁷ |
| Weight | g | 106 | 180 | 85 |

Accessories

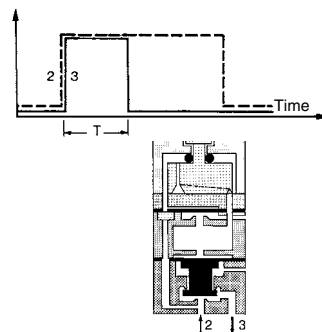
| | | | |
|---------------------------|---|------------|------------|
| Panel mounting adaptators | — | 79 451 904 | 79 451 905 |
| Weight (g) | — | 53 | 53 |

Principle of operation

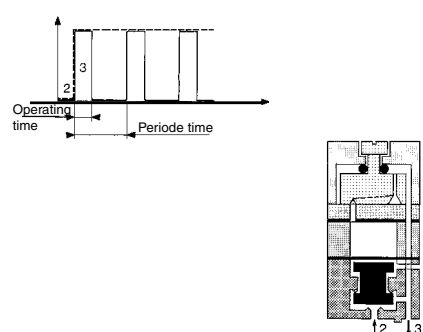
Single impulse generator



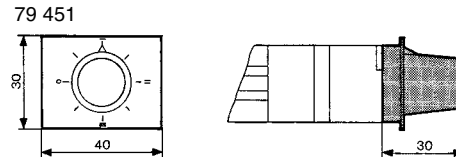
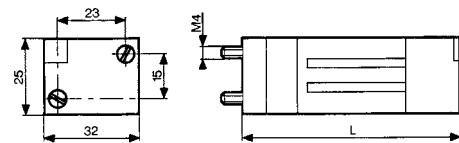
Adjustable impulse generator



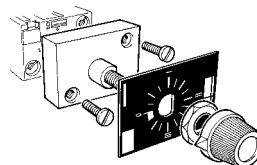
Frequency generator



Dimensions



| Part numbers | L (mm) |
|--------------|--------|
| 81 507 540 | 73 |
| 81 507 720 | 99 |
| 81 506 940 | 72 |



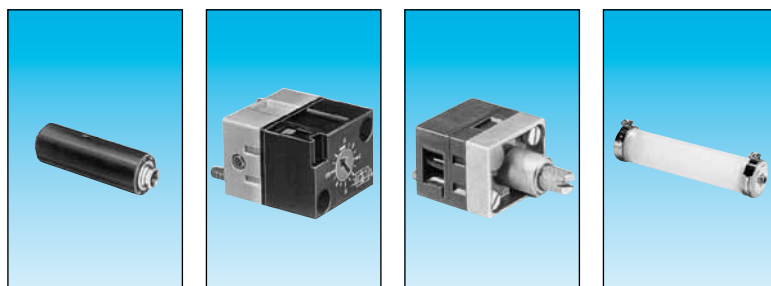
For panel mounting, a pre-drilled hole Ø 10.5 mm si required

ATEX version products are available in the following catalogues: **Pneumatic products for explosive atmospheres** or on our website www.crouzet.com

Timing Accessories

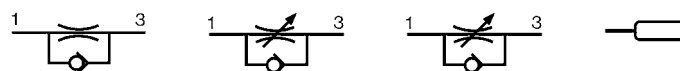


Also available in **ATEX** version for use in potentially explosive atmospheres in accordance with 94/9/EC Directive



| One-way in-line fixed flow restrictors | Flow at 4 bars Nm ³ /h | Ø orifice (mm) | | | | |
|--|--------------------------------------|----------------|--------|------------|------------|------------|
| | 0.18 → 0.30 | 0.3 | white | 81 529 003 | — | — |
| | 0.35 → 0.50 | 0.4 | yellow | 81 529 004 | — | — |
| | 0.58 → 0.77 | 0.5 | red | 81 529 005 | — | — |
| | 0.80 → 1.06 | 0.6 | green | 81 529 006 | — | — |
| | 1.10 → 1.39 | 0.7 | blue | 81 529 007 | — | — |
| | 1.45 → 1.65 | 0.8 | grey | 81 529 008 | — | — |
| | 2.30 → 2.80 | 1 | black | 81 529 010 | — | — |
| | 0.08 → 0.12 | 0.25 | white | 81 529 025 | — | — |
| One-way adjustable flow restrictor | | | | | 81 525 101 | 81 526 001 |
| Capacity for timing | 10 • 60 s | | | | | 79 458 808 |

Symbol



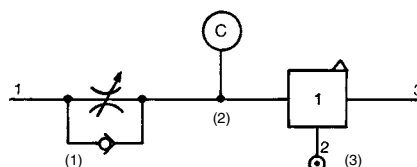
Characteristics

| | | | | | |
|-----------------------|---|----------------------|----------|----------|----------|
| Free flow | Nl/min | Depending on orifice | 30 | 200 | — |
| Orifice diameter | mm | Depending on orifice | 0 → 0.5 | 0 → 1.7 | — |
| Operating pressure | bars | 1 → 8 | 1 → 8 | 2 → 8 | — |
| Timing | s | — | — | — | 10 → 60 |
| Capacity | cm ³ | — | — | — | 30 |
| Connection | Sub-base page 4/14-4/15 Push-in connection for semi-rigid tubing (NFE 49100) | mm | Ø 4 | — | Ø 4 |
| Operating temperature | °C | -5 → +50 | -5 → +50 | -5 → +50 | -5 → +50 |
| Weight | g | 8 | 60 | 70 | 40 |

Connections

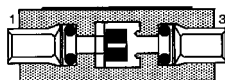
For timing circuit

- One-way flow restrictor 81 525 1 - 81 529 0 (1)
 - Reservoir 79 458 018 (2)
 - Relay element 81 503 0 - 81 506 0 (3) page 4/6-4/7
- Sub-base page 4/14-4/15

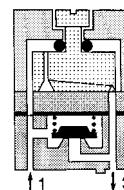


Principle of operation

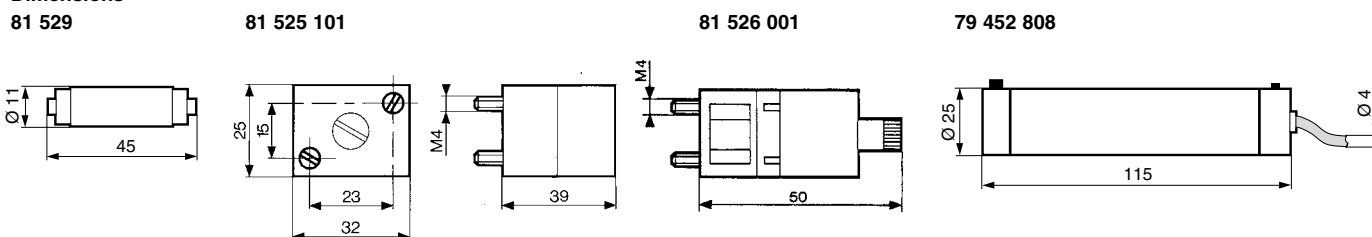
One-way
with fixed flow



One-way
with adjustable flow



Dimensions

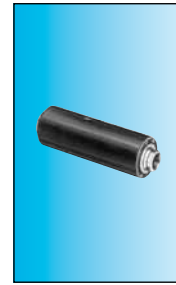
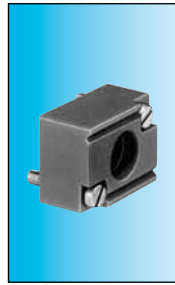


ATEX version products are available in the following catalogues: **Pneumatic products for explosive atmospheres** or on our website www.crouzet.com

Regulator accessories



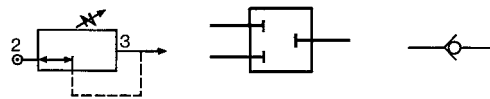
Also available in **ATEX** version for use in potentially explosive atmospheres in accordance with 94/9/EC Directive



Part numbers

| | | | |
|--------------------|------------|------------|------------|
| Mini-détendeur | 81 527 001 | — | — |
| Plug element | — | 81 520 601 | — |
| In-line non-return | — | — | 81 529 901 |

Symbol

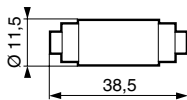


Characteristics

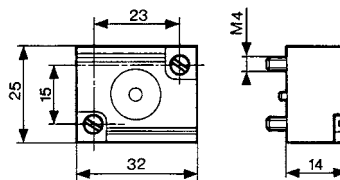
| | | | | |
|----------------------------|--|---------|----|-------|
| Operating pressure | bars | 2 → 8 | — | 2 → 8 |
| Flow at 6 bars | NI/min | 200 | — | 200 |
| Adjustable output pressure | bar | 0,1 → 8 | — | — |
| Connection | Sub-base | • | • | — |
| | Push-in connection for semi-rigid tubing (NFE 49100) | mm | — | Ø 4 |
| Weight | g | 150 | 70 | 70 |

Dimensions

81 529 901



81 520 601

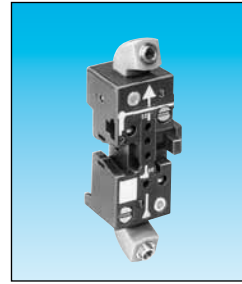
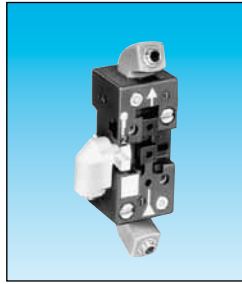


ATEX version products are available in the following catalogues: **Pneumatic products for explosive atmospheres** or on our website www.crouzet.com

Sub-bases for logic elements



Also available in **ATEX** version for use in potentially explosive atmospheres in accordance with 94/9/EC Directive



| | 81 532 104 | 81 532 102 |
|--------------------------------------|------------|------------|
| Two-hand start module | ● 1 | ● 1 |
| Manostats - vacuostats | ● 1 | ● 1 |
| Leak sensor and amplifier relays | ● 1 | ● 1 |
| Logic elements AND Timers | ● 1 | ● 1 |
| Regulator accessories | ● 1 | ● 1 |
| Memory element | — | — |
| Operating temperature °C | -5 → +50 | -5 → +50 |
| Electro-pneumatic miniature solenoid | ● 1 | ● 1 |

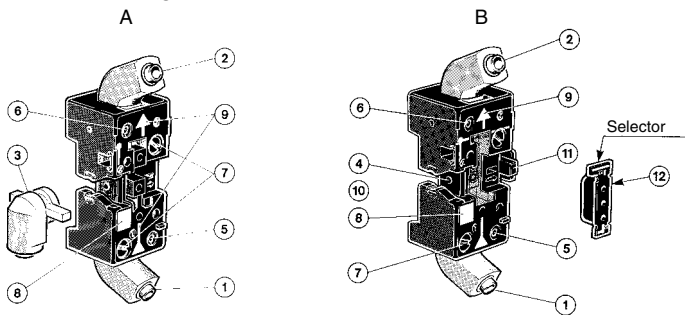
NB: The number indicates the number of components mounted on the sub-base

Characteristics

| | | |
|--|----------------|----------------|
| Push-in connection for semi-rigid tubing Ø 4 mm (NFE 49100) | rotatable | rotatable |
| Fixation | DIN rail 35 mm | DIN rail 35 mm |
| Weight | g 56 | 52 |

Connections elements and relays

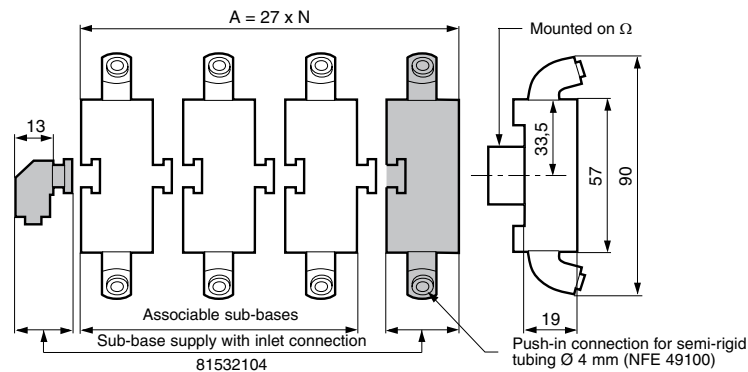
Front connecting



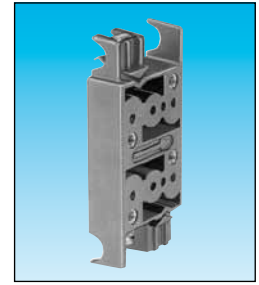
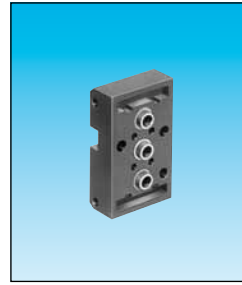
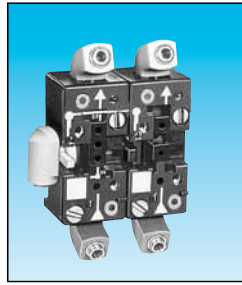
- A - Single sub-base or end base
- B - Associable sub-base
- 1 - Input port (green port 1)
- 2 - Output port (red port 3)
- 3 - Input/supply port (yellow port 2) Ø 4
- 4 - Input port integral to sub-base
- 5 - Input indicator (green)
- 6 - Output indicator (red)
- 7 - 1/4 turn screws
- 8 - Marking tag
- 9 - Arrow indicating flow direction
- 10 - Mounting tongue
- 11 - Mounting groove
- 12 - Selector

Dimensions

■ 81 532 104 □ 3 x 81532102



ATEX version products are available in the following catalogues: **Pneumatic products for explosive atmospheres** or on our website www.crouzet.com



| | |
|--------------------------------------|----------|
| Two-hand start module | |
| Manostats - vacuostats | |
| Leak sensor and amplifier relays | |
| Logic elements AND Timers | |
| Regulator accessories | |
| Memory element | ● 1 |
| Operating temperature °C | -5 → +50 |
| Electro-pneumatic miniature solenoid | — |

81 542 002

81 532 001

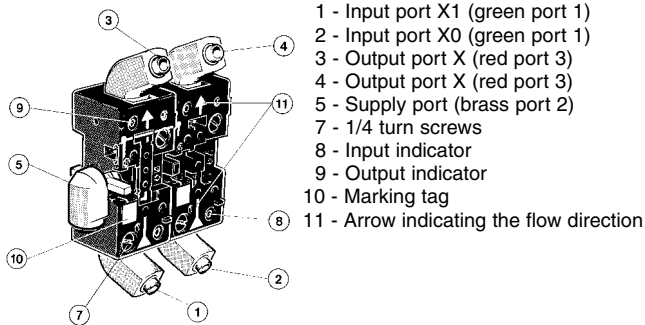
81 531 001

| | | |
|----------|----------|----------|
| — | ● 1 | ● 2 |
| — | ● 1 | ● 2 |
| — | ● 1 | ● 2 |
| — | ● 1 | ● 2 |
| — | ● 1 | ● 2 |
| — | — | ● 1 |
| -5 → +50 | -5 → +50 | -5 → +50 |
| — | ● 1 | ● 2 |

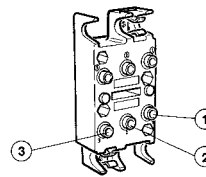
Caractéristiques

| | | | |
|--|----------------|-------------|---------------------------|
| Push-in connection for semi-rigid tubing Ø 4 mm (NFE 49100) | rotatable | rear | rear |
| Fixation | DIN rail 35 mm | 2 M4 screws | Clips for rails Ø 8 mm |
| Weight g | 95 | 10 | 35 |

Memory element sub-base, front and rear connecting



Rear connection



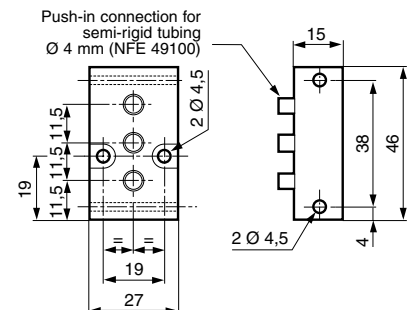
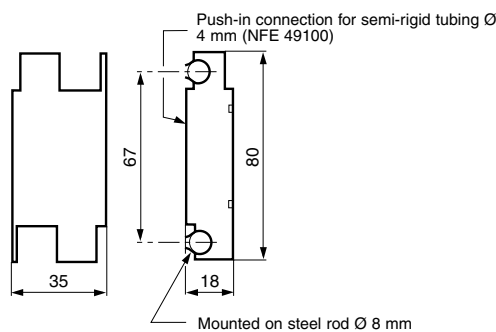
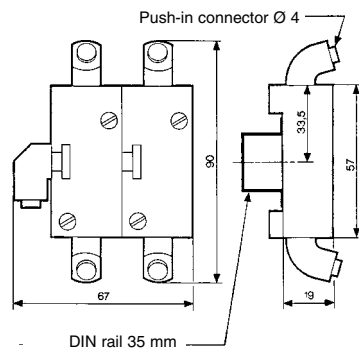
The modular system elements are fixed with two screws on the sub-base. A locating device on each logic element prevents incorrect assembly. The logic element is connected via the sub-base. This sub-base has 3 instant connections for connecting semi-rigid tubes with outer Ø 4.

- 1 - Input signal
- 2 - Signal port for passive logic elements, air supply for active logic elements.
- 3 - Output signal

81 542 002 (for memory 81523201/601)

81 531 001

81 532 001

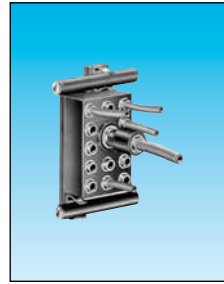
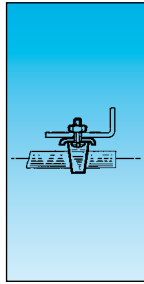
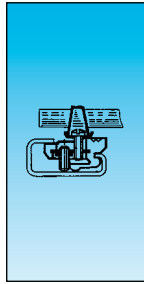
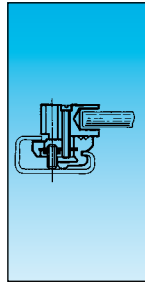


ATEX version products are available in the following catalogues: **Pneumatic products for explosive atmospheres** or on our website www.crouzet.com

Mounting accessories



Also available in **ATEX** version for use in potentially explosive atmospheres in accordance with 94/9/EC Directive



Mounting equipment

81 533 501
Hole domino

81 533 001
Clip domino

79 450 609
Bar clips
Ø 8

—

Supply manifold 13 outputs

—

—

—

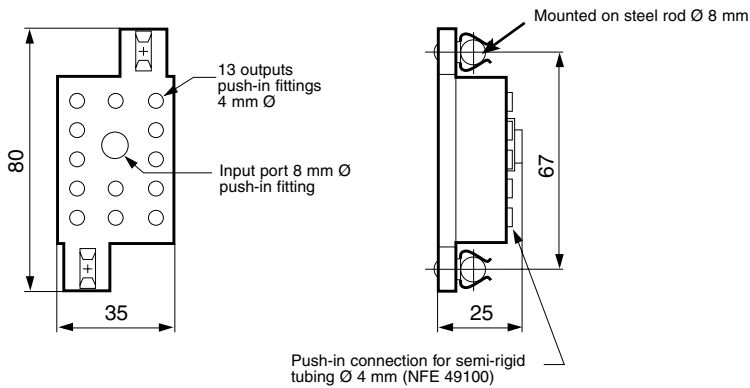
81 536 801

Characteristics

| | | | | |
|--------------------------|--|--|----------------------------|----------|
| Weight (g) | 8 For mounting on the end of a zinc-coated mild steel rod Ø 8 mm on an asymmetrical DIN rail | 4 For adjustable mounting on a zinc-coated mild steel rod Ø 8 mm on an asymmetrical DIN rail | 80 Packet of 100 pieces | 80 |
| Operating temperature °C | -5 → +50 | -5 → +50 | -5 → +50 | -5 → +50 |

Dimensions

81 536 804



Other information

Use Weidmuller plastic labels for marking components part number FW 4734-6.

ATEX version products are available in the following catalogues: **Pneumatic products for explosive atmospheres** or on our website www.crouzet.com